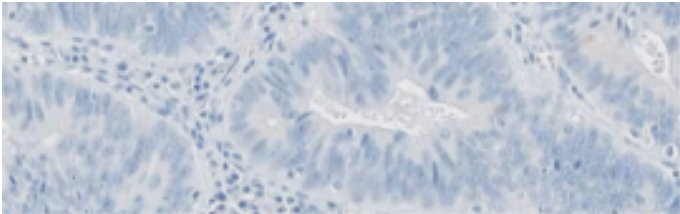


Interpreting stains

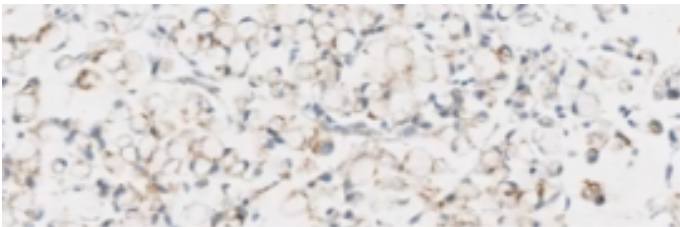
Studies have evaluated both membranous staining and percentage of tumor cells stained for CLDN18.2 expression^{1,2}

Based on 2 studies: one study comparing claudin 18.2 expression in primary tumors and lymph node metastases in Japanese patients with gastric adenocarcinoma and one study investigating the immunohistochemical (IHC) profile of claudin 18 in a series of gastric and GEJ adenocarcinomas.^{1,2}

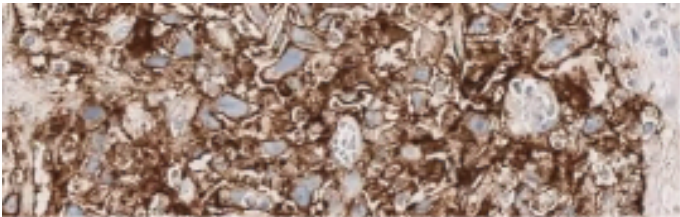
In G/GEJ tumors, CLDN18.2 status is determined by the percentage of tumor cells stained with moderate-to-strong membranous stain intensity.¹



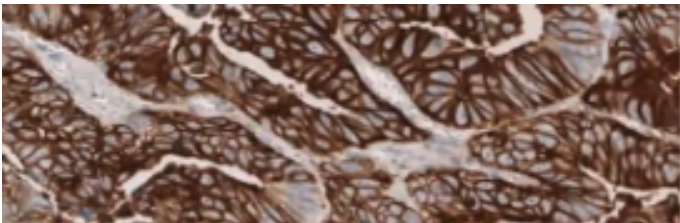
0 NO STAINING



1+ WEAK STAINING

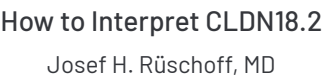


2+ MODERATE STAINING



3+ STRONG STAINING

- Tissue slides with tumor cells present can demonstrate varying levels of CLDN18 membranous staining intensity, ranging from no staining to strong staining (0 to 3+)
- Two recently published phase III studies defined CLDN18.2 positivity as $\geq 75\%$ of tumor cells demonstrating moderate-to-strong membranous staining^{3,4}



Click to view stain gallery and quiz

Stain quiz

When reporting CLDN18.2 results, both staining intensity and percentage of tumor cells stained should be included.¹

References: **1.** Pellino A, Brignola S, Riello E, et al. Association of CLDN18 protein expression with clinicopathological features and prognosis in advanced gastric and gastroesophageal junction adenocarcinomas. J Pers Med (Epub) 10-26-2021. **2.** Rohde C, Yamaguchi R, Mukhina S, et al. Comparison of Claudin 18.2 expression in primary tumors and lymph node metastases in Japanese patients with gastric adenocarcinoma. Jpn J Clin Oncol 2019;49(9):870-6. **3.** Shitara K, Lordick F, Bang YJ, et al. Lancet 2023;401(10389):1655-68. Errata in: Lancet 2023;402(10398):290; Lancet 2024;403(10421):30. **4.** Shah MA, Shitara K, Ajani JA, et al. Nat Med 2023;29(8):2133-41.

[Site Map](#)

[Privacy Policy](#)

[Terms of Use](#)

[Contact Us](#)

All trademarks are the property of their respective owners.

All case reviews and consensus scoring have been independently conducted by the members of the Key External Expert Committee.

©2024 Astellas Pharma US, Inc.

MAT-US-ZOL-2024-00426 06/24

